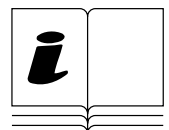


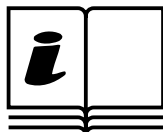
STANLEY®

ST-700-DR-E / ST-701-DR-E



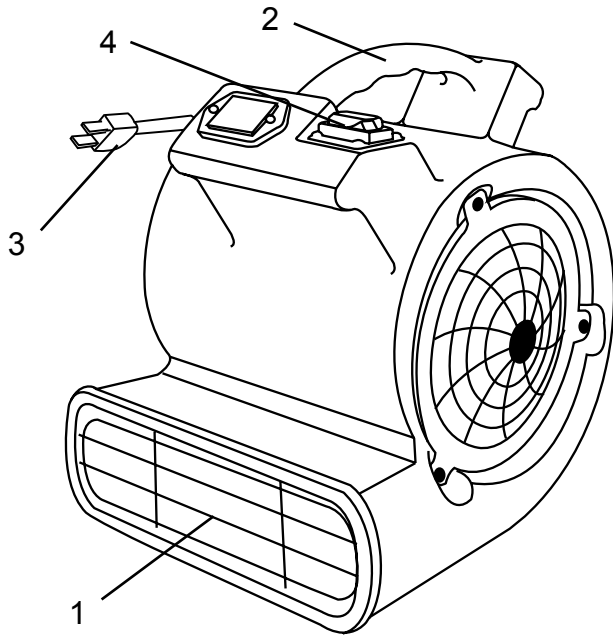
Industrial Fan Blower



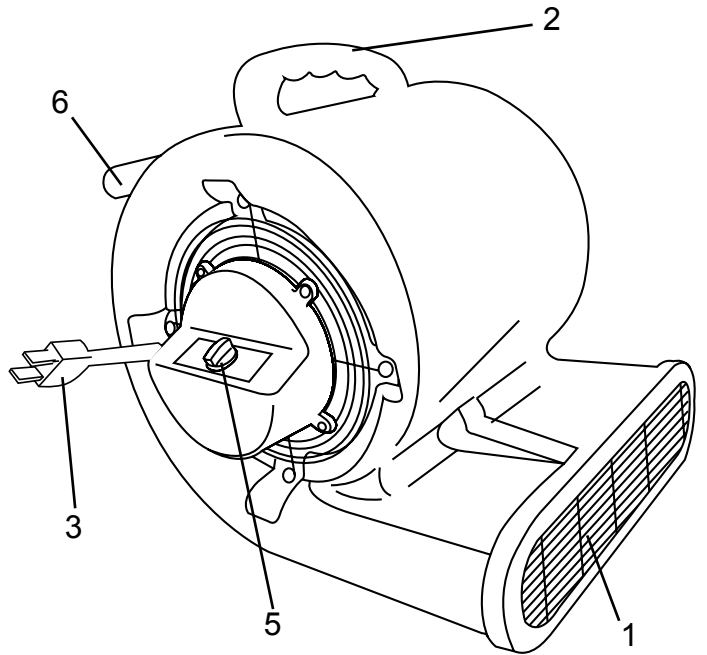


Read The Instruction manual: When this symbol is marked on a product, it means that the instructon manual must be read.

ST-700-DR-E



ST-701-DR-E



- GB**
- 1. FRONT GUARD
 - 2. HANDLE
 - 3. POWER CORD
 - 4. POWER SWITCH
 - 5. POWER KNOB
 - 6. CORD WRAP

GB

Safety Information

IMPORTANT: Read and understand all of the safety information and instructions in this manual before operating your blower. Retain this manual for future reference.

This blower is designed to dry damp surfaces quickly. This blower produces a high-volume flat air column that increases evaporation. For best results, be sure to install blower so all damp surfaces are exposed to the air flow.

▲ DANGER RISK OF EXPLOSION! Do Not operate this blower where there are harmful, explosive or flammable gasses, fumes or hazardous substances.

▲ WARNING When using mains-powered appliances, basic safety precautions, including the following, should always be followed to reduce the risk of fire, electric shock and personal injury.

▲ WARNING Do Not expose to rain or water spray. Do Not submerge this blower in water or use in excessively wet conditions.

▲ WARNING THIS IS NOT A TOY! Keep out of reach of children. This blower is intended for use by only qualified persons.

▲ WARNING RISK OF INJURY! Keep hair, loose clothing, fingers and all body parts away from air inlet and outlet.

▲ WARNING RISK OF INJURY! DO NOT MOVE BLOWER WHILE IT IS OPERATING.

▲ WARNING RISK OF ELECTRIC SHOCK! TAKE PRECAUTIONS TO PREVENT INJURY.

▲ CAUTION In order to avoid a hazard due to inadvertent resetting of the thermal cut-out, this appliance must not be supplied through an external switching device, such as a timer, or connected to a circuit that is regularly switched on and off by the utility.

▲ CAUTION This appliance can be used by children aged from 8 years and above and persons with reduced physical, sensory or mental capabilities or lack of experience and knowledge if they have been given supervision or instruction concerning use of the appliance in a safe way and understand the hazards involved. Children shall not play with the appliance. Cleaning and user maintenance shall not be made by children without supervision.

Before operating ventilator, be sure that you know how to switch the ventilator off in an emergency.

ALWAYS use only the electrical power (voltage and frequency) specified on the model plate of the ventilator.

ALWAYS use an extension cord properly rated for this appliance.

ALWAYS install the ventilator so that it is not directly exposed to water spray, rain or dripping water.

ALWAYS ensure that all cords are protected against short circuit and overload.

ALWAYS disconnect ventilator from power source when not in use.

If the supply cord is damaged, it must be replaced by the manufacturer, its service agent or similarly qualified persons in order to avoid a hazard.

NEVER pull or carry ventilator by power cord.

NEVER block air inlet or air outlet while in operation.

NEVER insert any objects through the fan guard.

NEVER use ventilator with an external switching device, such as a timer.

NEVER use to ventilate harmful, explosive, flammable or volatile gases, fumes or substances.

If ventilator is damaged, do not use it. The ventilator must be serviced by a qualified person or service agent.

Before operating ventilator be sure there are no items that can be blown about by the stream of air. The mandatory minimum distance from the ventilator is one meter.

STANLEY **STANLEY** STANLEY, The STANLEY Logo, The Notched Rectangle and the Yellow and Black Diagonal Package Design are all trademarks of Stanley Black & Decker, Inc. or an affiliate thereof.

Operation

1. Remove blower from packaging. Be certain no packaging materials are blocking the air inlet (rear) or air outlet (front).
2. Place blower on level ground.
3. Connect blower to a grounded power outlet with an approved power rating using a 14 AWG or better power cord.

Model ST-700-DR-E:

4. Push power switch on top of blower to the "ON" Position. (Figure 1)

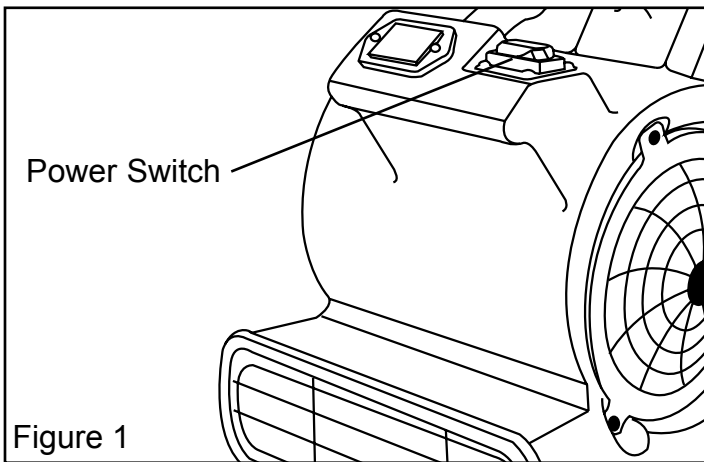


Figure 1

Model ST-701-DR-E:

4. Turn the control knob to the desired speed: 1, 2, 3. (Figure 2)

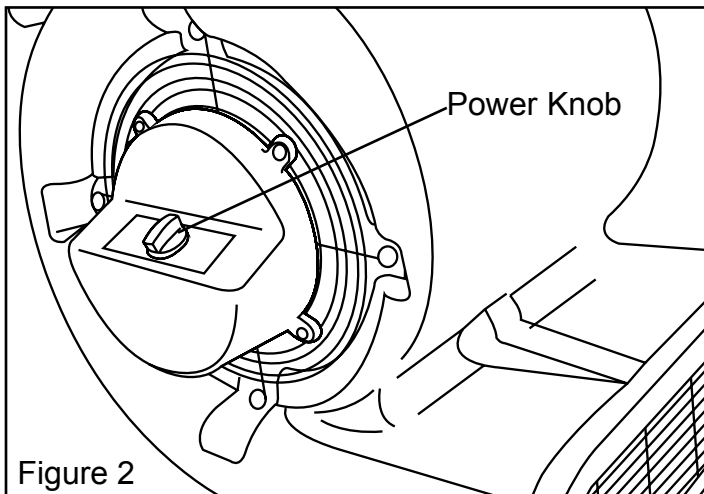


Figure 2

NOTE: The direction of moving air is indicated by an arrow on the blower housing.

Moisture Control

This blower produces a flat air column which is well suited for drying and evaporating excess moisture from floors.

NOTE: This blower will not prevent mold or mildew formation. To prevent mold or mildew formation this blower should be used in unison with a dehumidifier.

Ventilation and Cooling

This blower can drop the temperature of an over-heated room by moving large quantities of air rapidly.

Stacking

The housing is designed to stack one blower on top of another. ST-701-DR-E Only (Figure 3)

ALWAYS be certain blower is on level ground before stacking.

ALWAYS be certain the blowers are stacked properly and securely before operating.

NEVER stack more than two (2) blowers in a single stack.

▲WARNING RISK OF INJURY! DO NOT MOVE BLOWER WHILE IT IS OPERATING!

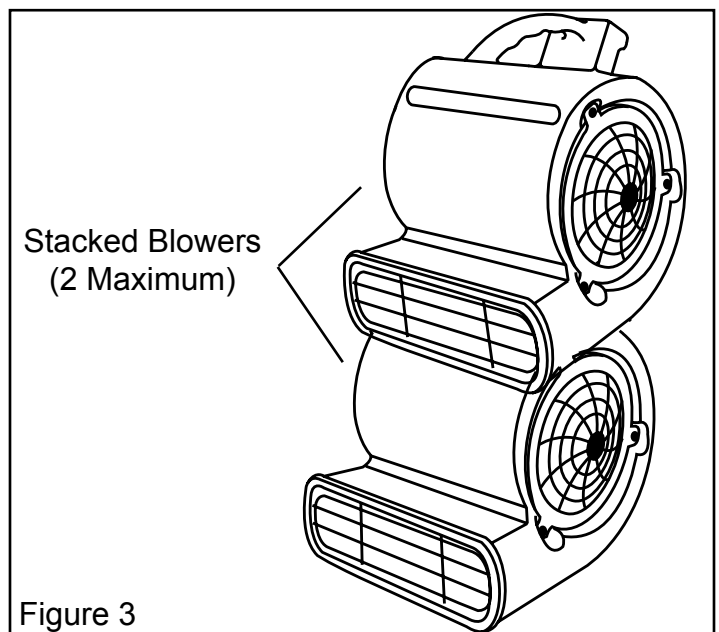


Figure 3

Plug Replacement

▲ WARNING RISK OF ELECTRIC SHOCK! DISCONNECT FROM POWER BEFORE MAINTENANCE.

NOTE: This section only applies to blowers sold or used in Great Britain.

This appliance is supplied with a BS1363 3 pin plug fitted with a fuse. Should the fuse require replacement, it must be replaced with a fuse with the proper amp rating. (see Technical Specifications page 2) and approved to BS1362.

In the event the mains plug has to be removed/ replaced for any reason, please note:

IMPORTANT: The wires in the mains lead are colored in accordance with the following code:

Blue – Neutral Brown – Live
Green/Yellow – Earth

As the colors of the wires in the mains lead of this appliance may not correspond with the colored markings identifying the terminals in your plug, proceed as follows:

The blue wire must be connected to the terminal marked with an N or colored black. The brown wire must be connected to the terminal marked with an L or colored red. The green/ yellow wire must be connected to the earthing terminal which is marked with an E or with the earth symbol.

▲ WARNING Never connect live or neutral wires to the earth terminal of the plug.

NOTE: If a moulded plug is fitted and has to be removed take great care in disposing of the plug and severed cable, it must be destroyed to prevent engaging into a socket.

Plug Replacement Wiring Diagram

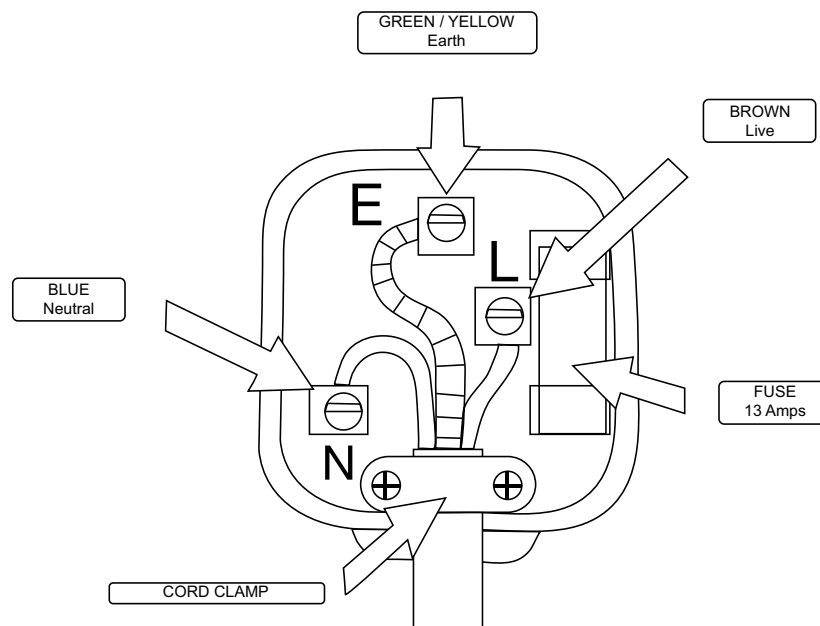


Figure 4

Maintenance

▲WARNING Risk Of Injury! Always disconnect the blower from the power source before maintenance.

ELECTRICAL SYSTEM

Check the power cable regularly for damage. If the power cable is damaged, it must be replaced by qualified person or a service agent.

AIR OUTLETS

Dust and other dirt that can collect in the air outlet must be cleaned and removed regularly.

HOUSING

Clean the housing with a mild detergent and water.

EXTERNAL PARTS

Check all external parts to ensure they have been installed properly. Be alert for unusual noises.

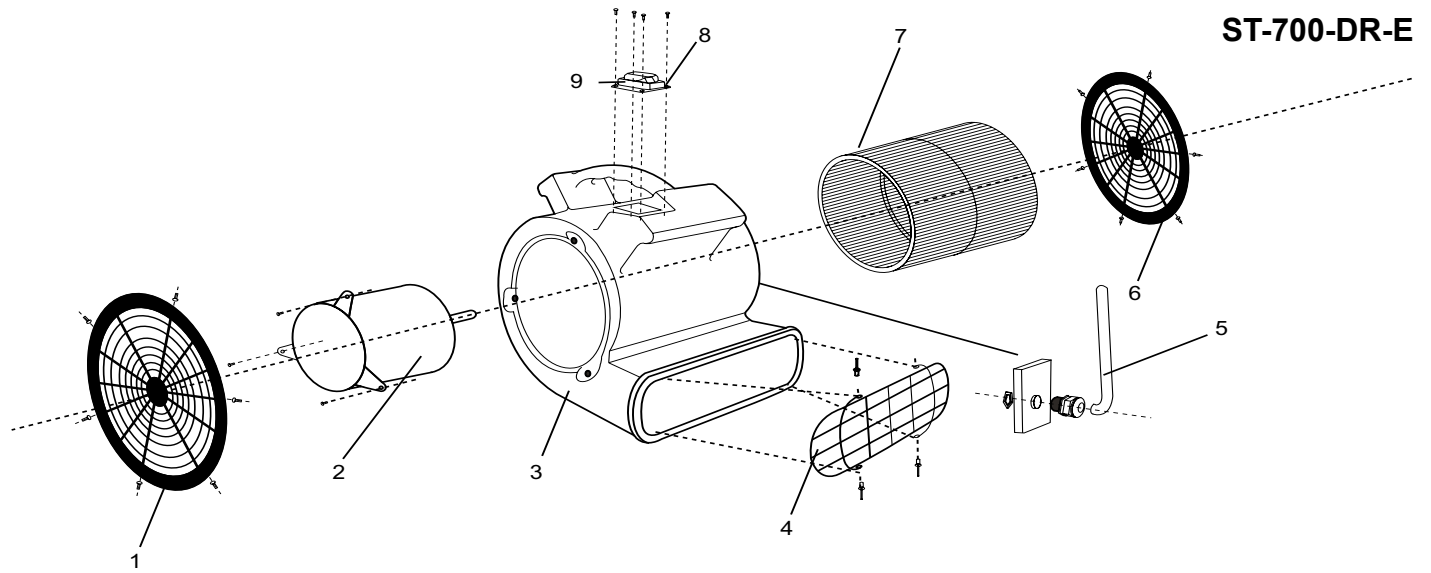
KEEP MOTOR AND WIRING DRY

DO NOT use a water hose or any pressurized washing device to clean your blower. If any electrical elements do get wet, they must be dried immediately.

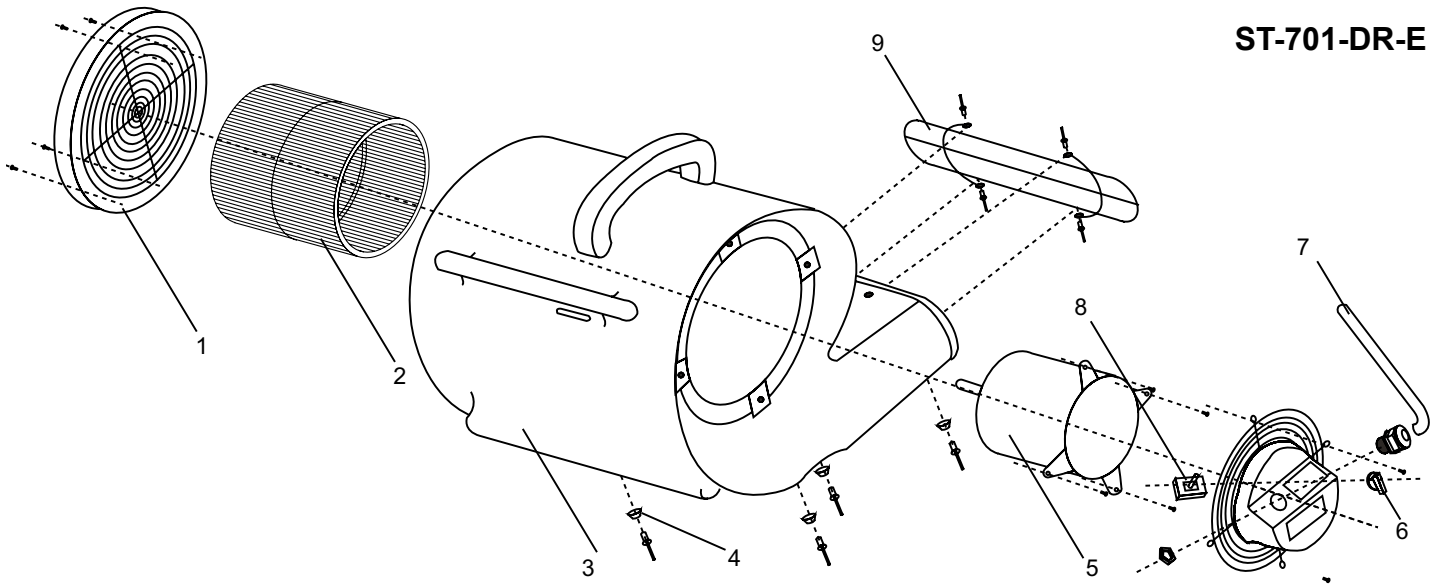
Troubleshooting Guide

| Problem | Possible Cause | Solution |
|--|---|--|
| Motor does not run | <ol style="list-style-type: none"> 1. No power supply to the device. 2. Switch / knob not turned on. 3. Fan wheel blocked. 4. Air inlet or outlet is blocked. 5. Switch is broken. 6. Loose wiring. | <ol style="list-style-type: none"> 1. Connect device, check fuse. 2. Turn knob on / press power switch to ON. 3. Inspect fan wheel and remove blockage. 4. Remove blockage and clean air inlet and air outlet. 5. Return to service agent. 6. Return to service agent. |
| Motor runs, but wheel spins irregularly or hits sides. | <ol style="list-style-type: none"> 1. A heavy impact has bent the motor suspension so that the wheel is stuck. 2. A heavy impact has let the motor slide out of the suspension so that the wheel is stuck. | <ol style="list-style-type: none"> 1. Return to service agent. 2. Return to service agent. |
| Device vibrates excessively | <ol style="list-style-type: none"> 1. Fan wheel is stuck. 2. Fan wheel is unbalanced. 3. Fan wheel is bent. 4. Motor Shaft is bent. | <ol style="list-style-type: none"> 1. Clean fan wheel. 2. Return to service agent. 3. Return to service agent. 4. Return to service agent. |

Exploded View



ST-700-DR-E



ST-701-DR-E

Parts List

| # | ST-700-DR-E | ST-701-DR-E |
|---|-------------|-------------|
| 1 | 92-003-0010 | 92-003-0020 |
| 2 | 92-008-0010 | 92-009-0011 |
| 3 | 92-001-0010 | 92-001-0020 |
| 4 | 92-002-0010 | 92-013-0010 |
| 5 | 92-024-0010 | 92-008-0020 |
| 6 | 92-002-0010 | 92-025-0020 |
| 7 | 92-009-0001 | 92-024-0020 |
| 8 | 92-025-0010 | 92-026-0020 |
| 9 | 92-026-0010 | 92-002-0020 |